

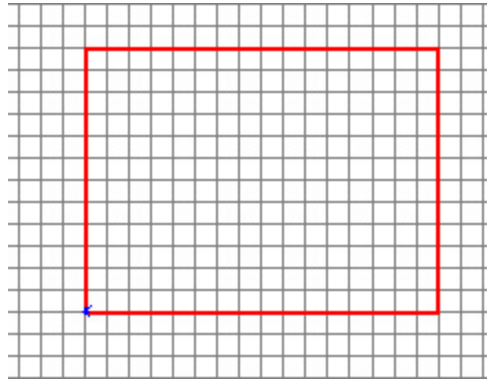
# LOD Terrain

**What we are going to do:**

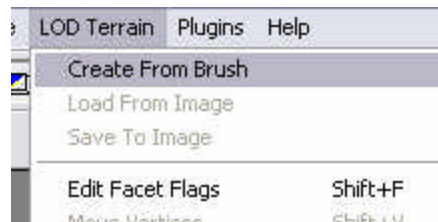
OK, This tut will teach u how to make a terrain w/lod terrain!

**Get Going!**

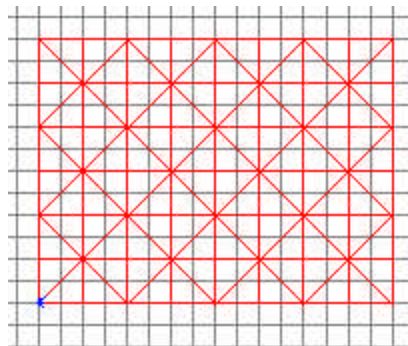
Okay, in MOHRadiant, make a square the saze of the terrain u want, and make it about 8 units thick. The mine is 1586x2048x8:



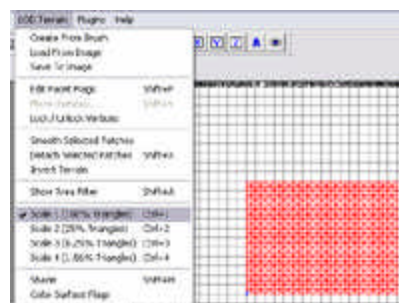
Good. Now go to "LOD Terrian" "Creat From Brush":



And your box will turn all griddy:



Super. Now you can change the size of these grids if you go to "LOD Terrain" "Scale 100%" There others, but I am using 100%, it makes them nice and small:



Okay, now go to "LOD Terrain" "Save Image" and save it to your desktop, it will be named "terrain.tga" now open that in Photoshop. I am using photoshop 7. This is what it will look like

