

Setting up EasyGen

What we are going to do:

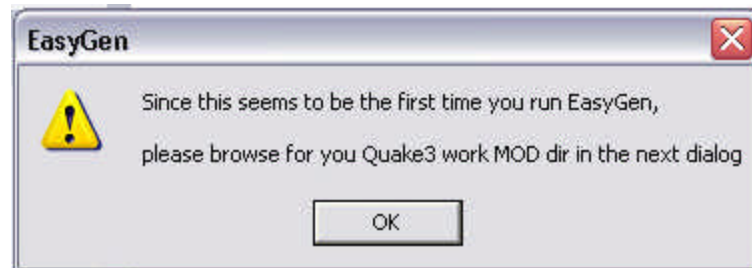
Going to setup EasyGen

Get Going!

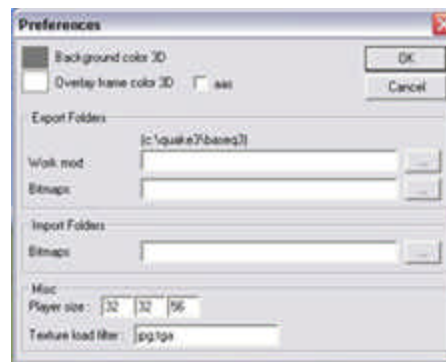
After you download EasyGen, Extract it where ever you want! I just kept mine on my desktop.

Then double click on the EasyGen name/logo "  EasyGen "

And you will get this pop up:



Hit "OK" and it will change into this:



Now just fill in the blanks! use the "..." to find directories:

Work Mod: Is where ever you MOHAA file is! The actual Game. Mine is "c:\program files\ea games\mohaa"

Bitmaps: You will have to make a folder for this, make it anywhere. Mine is "c:\program files\ea games\mohaa\main\bmp" I made the "bmp" folder

Bitmaps: The second Bitmap is where you will import your .bmp's from, so make another folder in your main directroy, mine is "c:\program files\ea games\mohaa\main\bmpin"

So everything should look like this:

